



wybór
Innovation for a better lifestyle

DIGITAL
SIGNAGE

Unleash the power of
Digital Signage



**PRODUCT
CATALOGUE**



wybór

Innovation for a better lifestyle

A large area of the page is filled with horizontal dashed lines, serving as a template for text or a list.

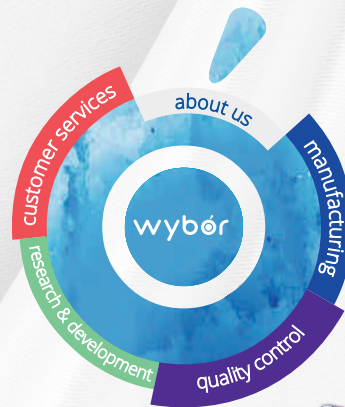
ABOUT US

The brand owners of Wybor, Malhotra Electronics Private Limited (MEPL), started the journey four decades ago, under exceptionally humble circumstances, with brothers Manjeet Singh Malhotra, Tajinder Pal Singh Malhotra & Ravinder Singh Malhotra being designers, technicians, salesmen, accountant, service-engineers, proprietors and everything else to the business.

Years of indigenous drive has today put them in a position of unique strength - a combination of domain expertise and comprehensive back-end integration of manufacturing capabilities, rivaled perhaps no other in India.

The 7 point advantage

- More Than 4 Decades of Knowledge & Skills
- Comprehensive Manufacturing in India
- Global Sourcing of materials
- Wide Range of Consumer Electronics
- Highly Customer-Centric Orientation
- Advanced Research & Development
- Stringent Quality Control Norms





Floor Standee



Content Mgmt Sys.
(Optional)



SUPERLUMA®
600 cd/m² (Nits)



Operation
(24X7)



Capacitive Touch
(Optional)



4G Sim Slot
(Optional)



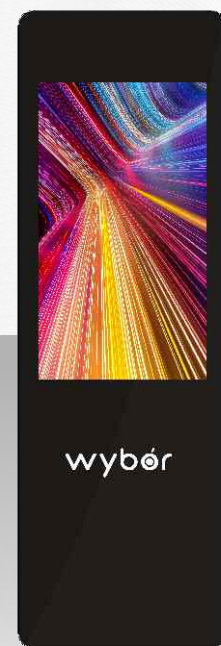
WiFi + LAN



Toughened Glass

Applications : Malls, Hospitality, Airports

	FS-DS1331	FS-DS1332	FS-DS960X
Screen Size	32/43		55/65/75/85
Resolution	1080 x 1920		2160 x 3840
Brightness	(600cd/m²) / (900 ~ 1200 cd/m²)		500 ~ 1000 cd/m²
Viewing Angle	178°(H) / 178° (V)		
Operating Systems	Android 10		Android 7.1
CPU	A133, Quad Core ARM Cortex-A53, 1.5GHz		Amlogic T960X 4-core ARM Cortex A53 clocked at 1.5GHz
GPU	GE8300-Quad core		ARM Mali-450
RAM/DDR-4	1GB	2GB	
ROM/eMMC	32GB		16GB (32GB Optional)
Operating Hours	24X7		
I/O Ports	USB-2, LAN, Ear Phone		USB-2, LAN, HDMI-IN-1, Mini AV IN, TF card
Network	LAN, Wifi (4G module Optional)		
Power Supply	100-240VAC / 50Hz		



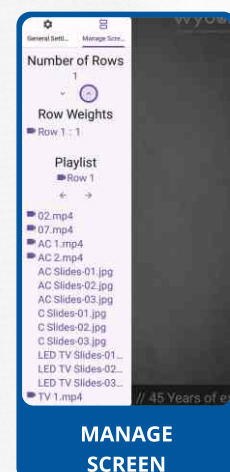


PENDRIVE BASED SOFTWARE

Offline pendrive-based solution is best suited for clients who do not need to update signage in multiple locations online. Our solution allows clients to update content easily from a pen drive or mobile app. The screen can be divided into multiple rows to show more than one content at a time. Ticker widget is also provided to show scrolling text at the bottom of the screen.

FEATURES

- Offline Operation (no Internet Required)
- Plug In, Copy, Plug Out
 - Content Stays In The Device's Memory Even After The Pendrive Is Removed
- Multiple Row Display
 - Row Height Ratios
 - Edit The Playlist For Each Row
- Scrolling Ticker Display
 - Speed
 - Ticker Colour
 - Ticker Font Size
- Hd Video And Photo Display
 - Different Fit Modes (fill, Fit, Zoom)
 - slide background colour
 - slide duration for photo slides
- Load and manage content from the mobile app
 - works on the same LAN/WiFi network



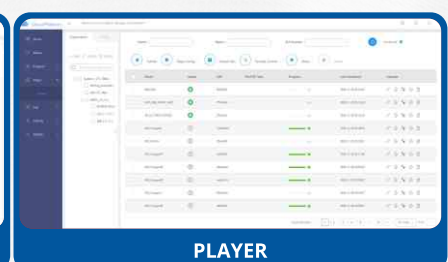
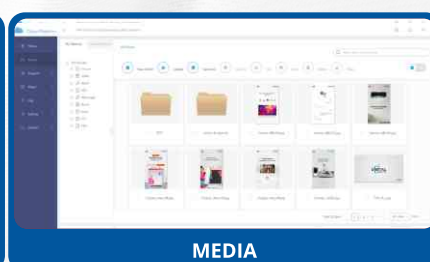
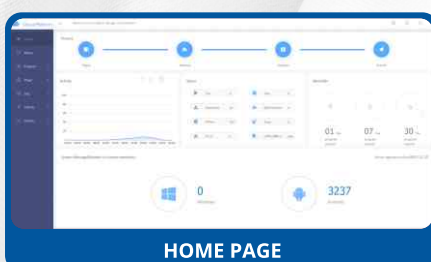


CLOUD BASED SOFTWARE

Our cloud-based solution allows clients to load content on devices remotely through the internet. With multi-user access with roles, multiple users can access the software with different permissions according to the client's requirements. Signage devices can be monitored for uptime, status and content playbacks. Software updates to devices can be delivered remotely.

FEATURES

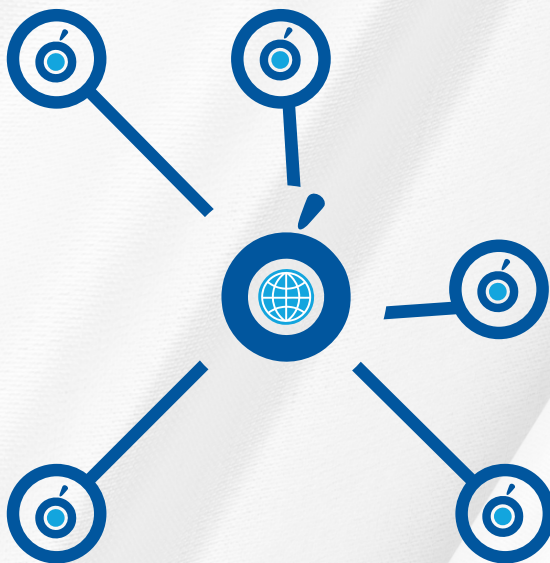
- Push content to devices from cloud based CMS
- Content downloads and plays offline
- Internet-based widgets (RSS, Weather)
- Device grouping
- Multi-user operation with roles
- Track the percentage of terminals online
- Filter devices according to their current status (play, stop offline etc.)
- Upload and manage content in folders (picture, video, music, RSS and more)
- Play list creator with multiple content display zones
- Track device on-time and off-time for the day
- Monitor device events
- Playback log for content play count
- Software updates delivered remotely



OUR VALUED CUSTOMERS



SERVICE NETWORK



STRONG AND WIDE SERVICE NETWORK

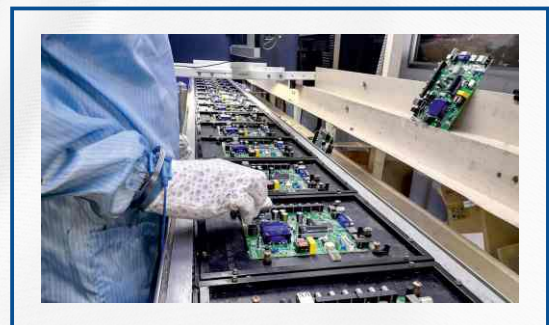
- 800+ Service center network
- 18000+ Pin Codes
- 3000+ Towns
- 150000+ Localities
- 28 States and 9 UT's

CUSTOMER CARE : 8750035000

Email : info@wybor.in

HEAD OFFICE: NOIDA, UP (DELHI NCR)

Manufacturing





wybór

Innovation for a better lifestyle

A series of horizontal dashed lines spanning the width of the page, providing a template for writing.

Future of Digital!



Contact Us!

- ✉ info@wybor.in
- ☎ 8750035000, 9810585974
- 🌐 digisign.wybor.in
- 📍 Malhotra Electronics Pvt. Ltd.
11-C Udyog Kendra, Echotech III, Greater Noida - 201306, UP

